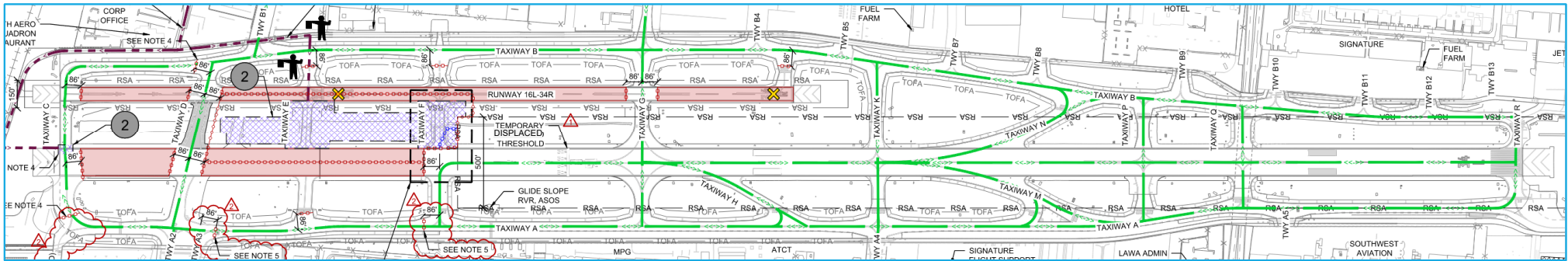


Phase 2 – Taxiway E (east) and F (east) Reconstruction

31 Calendar Days, April 17 to May 18



Runway 16R-34L Declared Distances

	RWY 16R		RWY 34L	
	Existing	Proposed	Existing	Proposed
TODA			8,001'	5,000'
TORA	8,001'	5,824'	8,001'	5,000'
ASDA			7,261'	4,824'
LDA	6,570'	5,224'		

Construction Phase Notes

Construction

1. Work Hours: Daytime, Minimum 10-hr shifts.
2. Work Days: Monday thru Saturday.
3. Duration: 31 Calendar Days

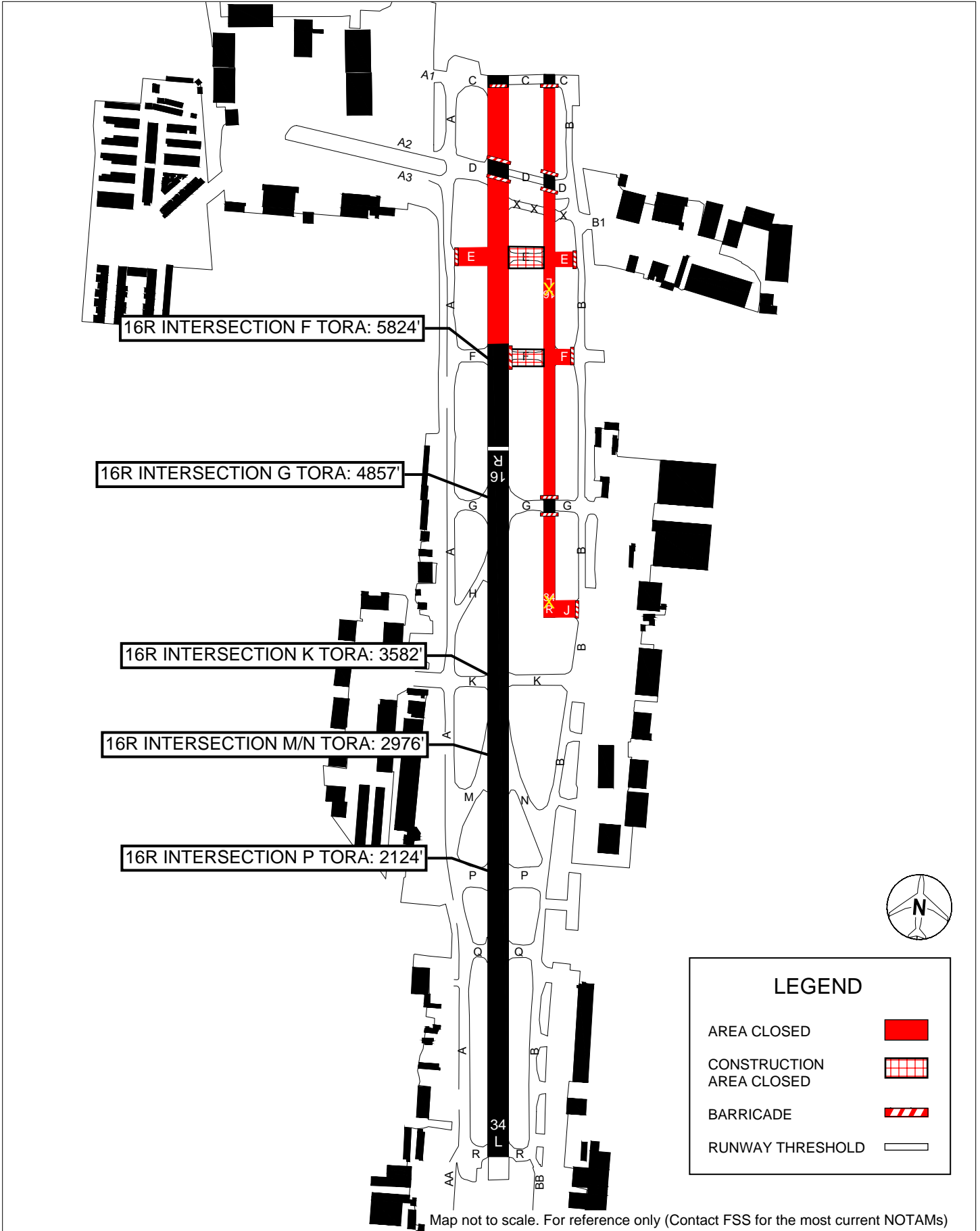
Airfield Operations

1. Runway 16L-34R – Closed
2. Runway 16R-34L – Threshold Displaced, Shortened
 - a. 16R ILS Not Available
 - b. 16R PAPI Not Available, Temporary PLASI Available

VNY AIRPORT

RWY 16R Shortened Declared Distances
Construction Phase 2 Approximately 4/17/25 to 5/20/25

Current as of: 4/4/25



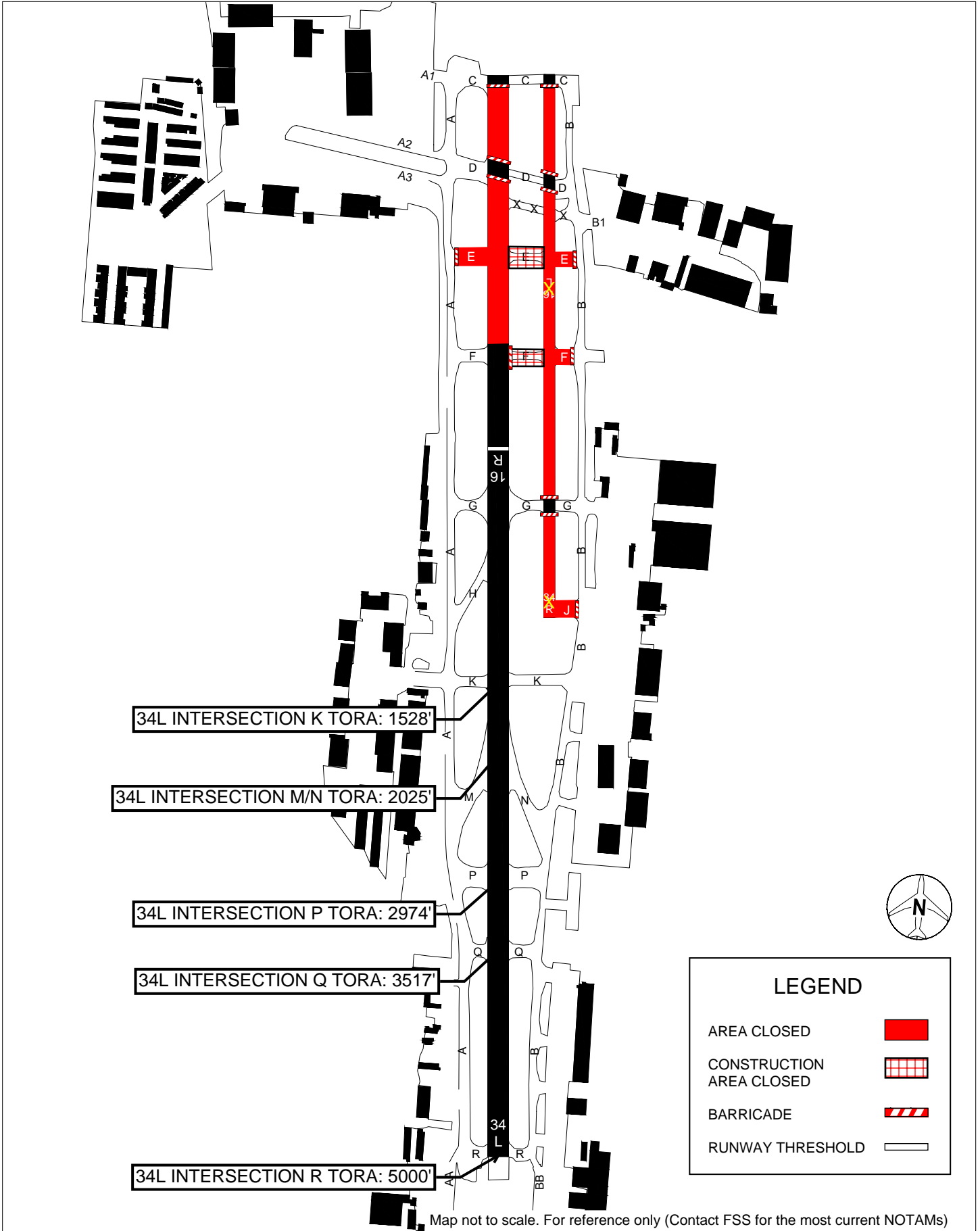
Map not to scale. For reference only (Contact FSS for the most current NOTAMs)

VNY AIRPORT

RWY 34L Shortened Declared Distances

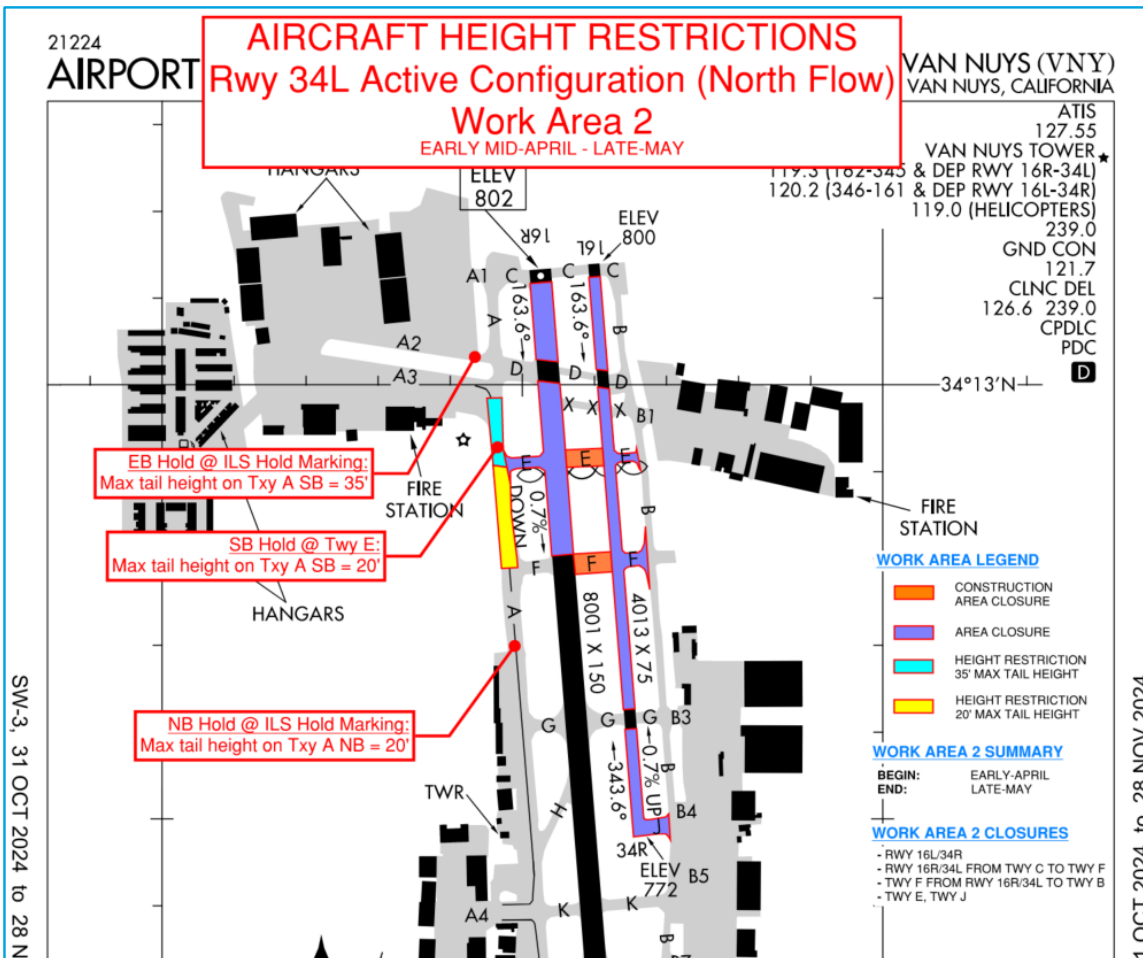
Construction Phase 2 Approximately 4/17/25 to 5/20/25

Current as of: 4/4/25



Map not to scale. For reference only (Contact FSS for the most current NOTAMs)

Phase 2 – Taxiway E (east) and F (east) Reconstruction 31 Calendar Days, April 17 to May 18



North Flow, 34L Active Aircraft Height Restrictions

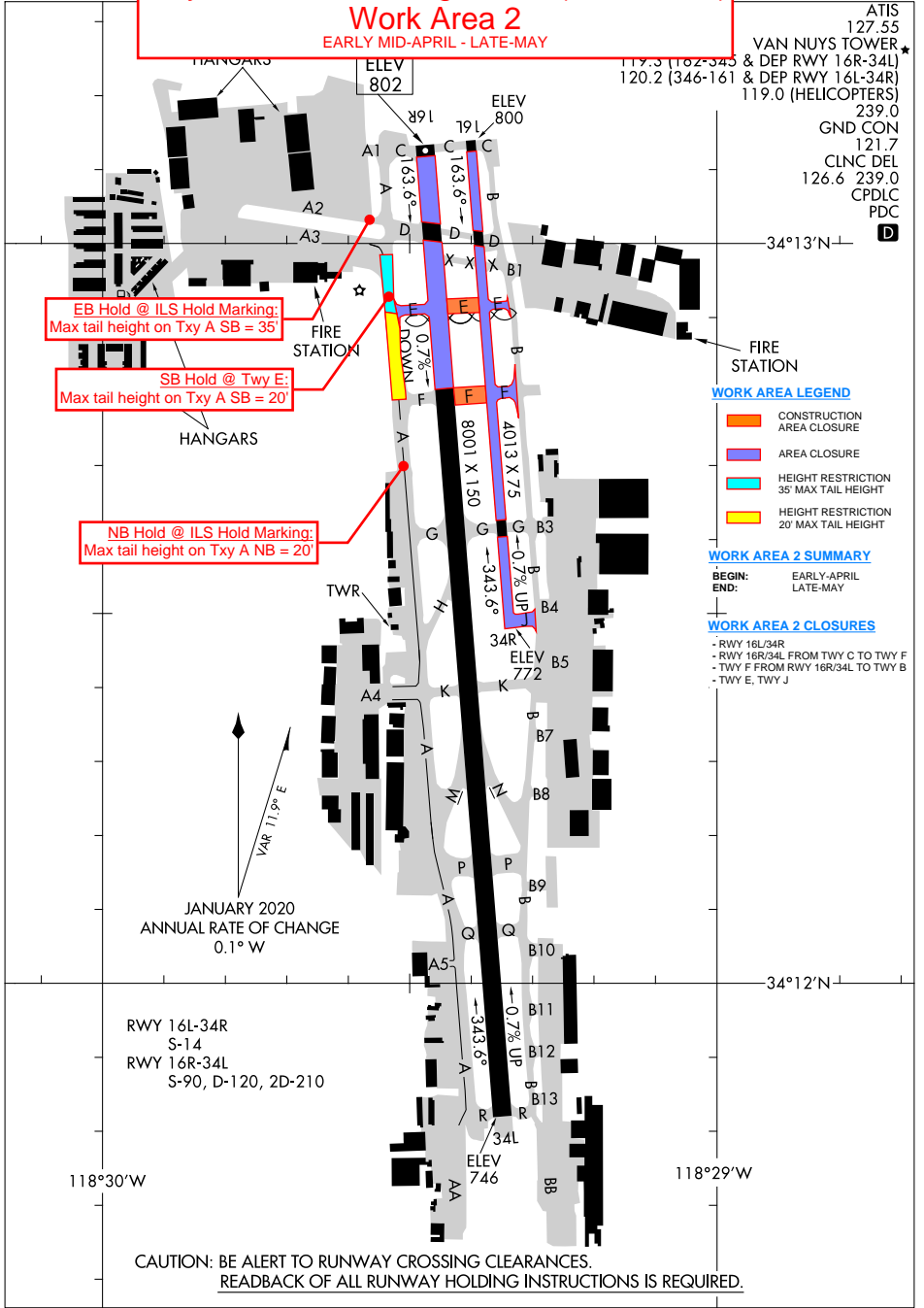
- Hold Positions for Aircraft Height Restrictions:**
- 35' Max Tail Height:
 - ILS hold marking for SB aircraft on TWY A2 at TWY A
 - 20' Maximum Tail Height:
 - TWY E intersection for SB aircraft on TWY A
 - ILS hold marking south of TWY F for NB aircraft on TWY A
- Height restricted areas are closed when ATCT is closed from 2245 to 0600**

AIRCRAFT HEIGHT RESTRICTIONS Rwy 34L Active Configuration (North Flow)

Work Area 2 EARLY MID-APRIL - LATE-MAY

VAN NUYS (VNY)
VAN NUYS, CALIFORNIA

ATIS 127.55
 VAN NUYS TOWER 239.0
 & DEP RWY 16R-34L 119.3 (162-345)
 & DEP RWY 16L-34R 120.2 (346-161)
 119.0 (HELICOPTERS)
 GND CON 121.7
 CLNC DEL 126.6 239.0
 CPDLC
 PDC



- WORK AREA LEGEND**
- CONSTRUCTION AREA CLOSURE
 - AREA CLOSURE
 - HEIGHT RESTRICTION 35' MAX TAIL HEIGHT
 - HEIGHT RESTRICTION 20' MAX TAIL HEIGHT

WORK AREA 2 SUMMARY

BEGIN: EARLY-APRIL
 END: LATE-MAY

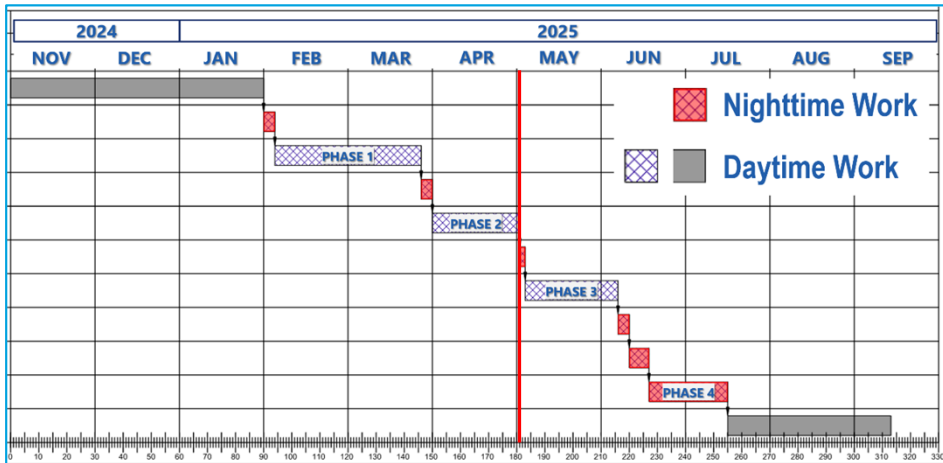
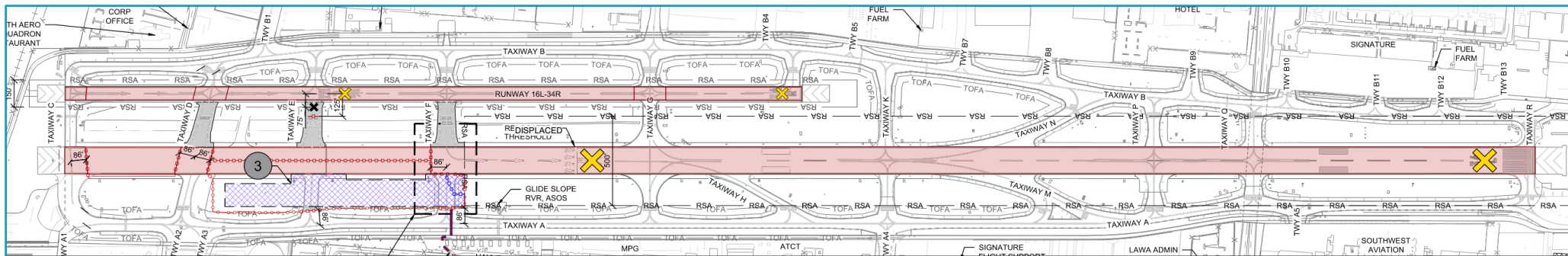
- WORK AREA 2 CLOSURES**
- RWY 16L/34R
 - RWY 16R/34L FROM TWY C TO TWY F
 - TWY F FROM RWY 16R/34L TO TWY B
 - TWY E, TWY J

SW-3, 31 OCT 2024 to 28 NOV 2024

SW-3, 31 OCT 2024 to 28 NOV 2024

CAUTION: BE ALERT TO RUNWAY CROSSING CLEARANCES.
 READBACK OF ALL RUNWAY HOLDING INSTRUCTIONS IS REQUIRED.

Phase 3A – Phase 3 Pre-Work 2 Calendar Nights, May 18 to May 20



Construction Phase Notes

- Construction**
1. Work Hours: Nighttime 2230 to 0600.
 2. Work Days: Sunday to Tuesday.
 3. Duration: 2 consecutive calendar nights.
 4. Other Criteria:
 - a. Runway 16R-34L shall reopen by 0600 at the end of the first night.
 - b. Runway 16L-34R opening and taxiway closures / openings shall take effect over the final night of the phase.

- Airfield Operations**
1. Runway 16L-34R and 16R-34L – Closed
 2. Various Taxiways on north end – Closed